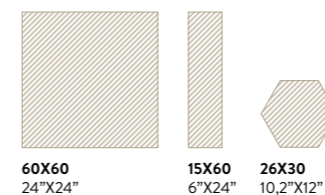


LE TERRE

IL FASCINO DELLE ARGILLE LAVORATE A MANO.
THE CHARM OF HAND-WORKED CLAYS.



LE TERRE



GRES PORCELLANATO
PORCELAIN TILES



IL FASCINO DELLE ARGILLE LAVORATE A MANO.
THE CHARM OF HAND-WORKED CLAYS.

















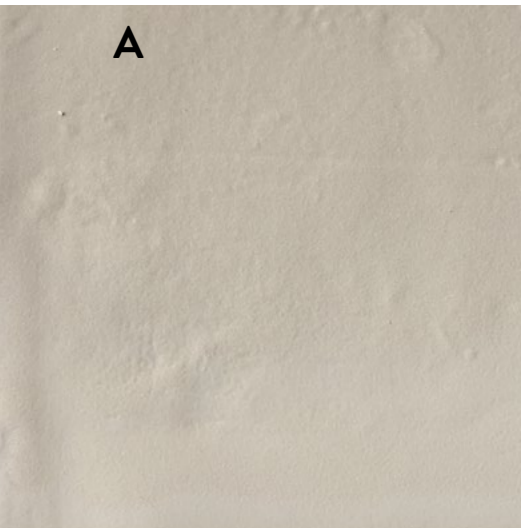




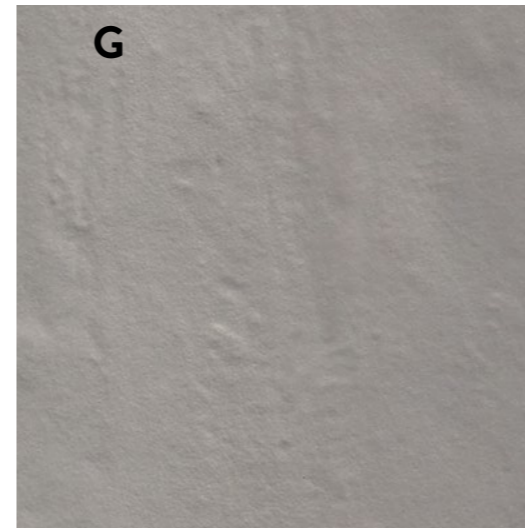
LE TERRE

GRES PORCELLANATO . PORCELAIN TILE

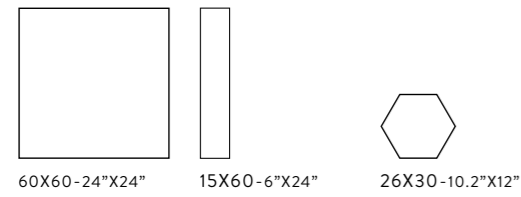
LE TERRE



A

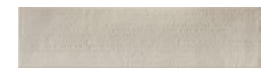


G



60X60-24"X24" 15X60-6"X24" 26X30-10.2"X12"

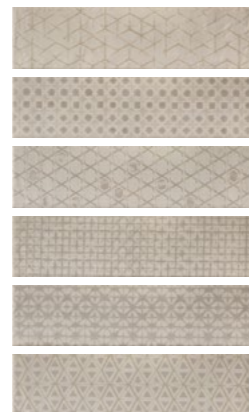
LE TERRE 60A LE TERRE 156A LE TERRE 6 A



CHARACTER 156A
15X60-6"X24"



CHARACTER 6 A
26X30-10.2"X12"



MALIKA 156A
15X60-6"X24"



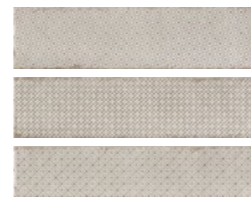
MALIKA 6 A
26X30-10.2"X12"



L.IDENTITY1AMIX
15X60-6"X24"



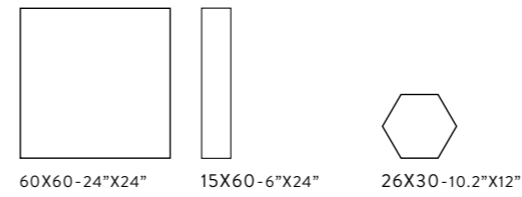
L.IDENTITY1 6AMIX
26X30-10.2"X12"



L.IDENTITY2AMIX
15X60-6"X24"



IDENTITY2 6AMIX
26X30-10.2"X12"

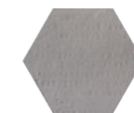


60X60-24"X24" 15X60-6"X24" 26X30-10.2"X12"

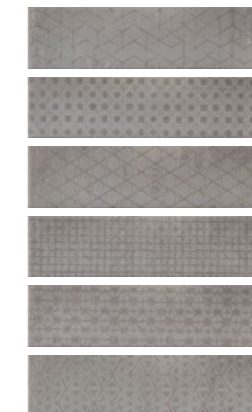
LE TERRE 60G LE TERRE 156G LE TERRE 6 G



CHARACTER 156G
15X60-6"X24"



CHARACTER 6 G
26X30-10.2"X12"



MALIKA 156G
15X60-6"X24"



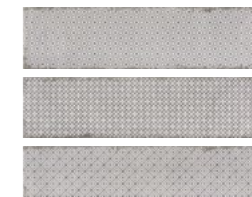
MALIKA 6 G
26X30-10.2"X12"



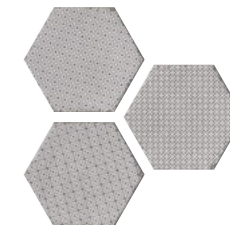
L.IDENTITY1GMIX
15X60-6"X24"



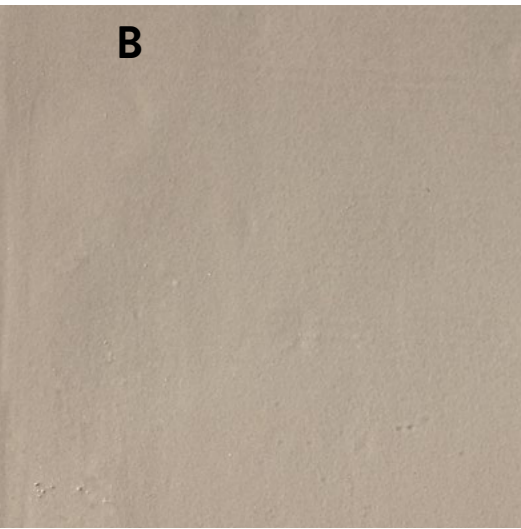
L.IDENTITY1 6GMIX
26X30-10.2"X12"



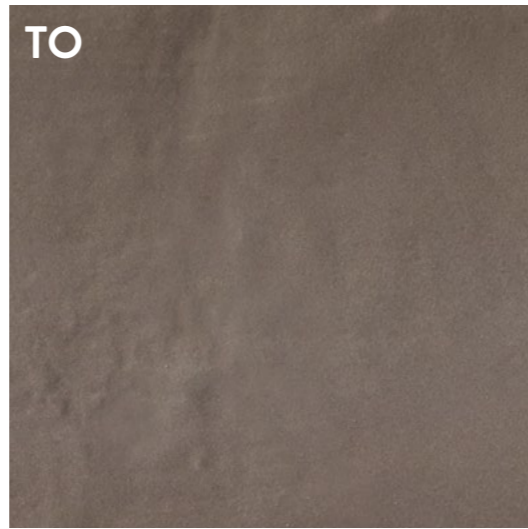
L.IDENTITY2GMIX
15X60-6"X24"



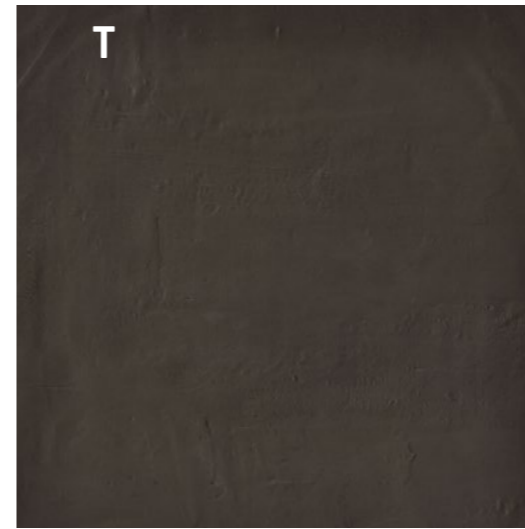
IDENTITY2 6GMIX
26X30-10.2"X12"



B



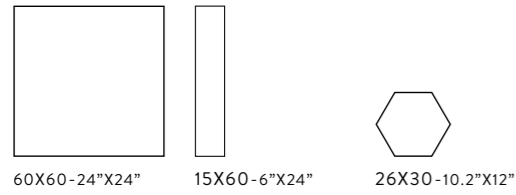
TO



T

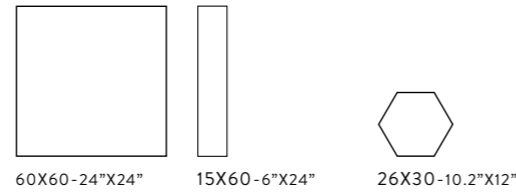


W



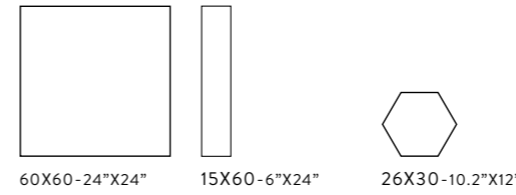
60X60-24"X24" 15X60-6"X24" 26X30-10.2"X12"

LE TERRE 60B LE TERRE 156B LE TERRE 6 B



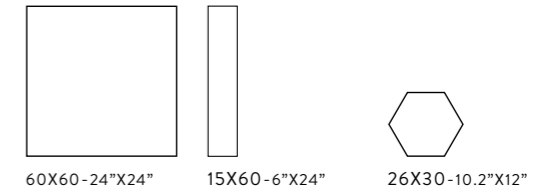
60X60-24"X24" 15X60-6"X24" 26X30-10.2"X12"

LE TERRE 60TO LE TERRE 156TO LE TERRE 6 TO



60X60-24"X24" 15X60-6"X24" 26X30-10.2"X12"

LE TERRE 60T LE TERRE 156T LE TERRE 6 T



60X60-24"X24" 15X60-6"X24" 26X30-10.2"X12"

LE TERRE 60W LE TERRE 156W LE TERRE 6 W



CHARACTER 156B
15X60-6"X24"



CHARACTER 6 B
26X30-10.2"X12"



CHARACTER 156TO
15X60-6"X24"



CHARACTER 6 TO
26X30-10.2"X12"



CHARACTER 156T
15X60-6"X24"



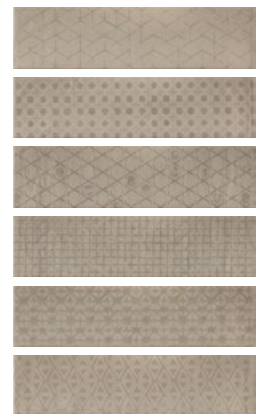
CHARACTER 6 T
26X30-10.2"X12"



CHARACTER 156W
15X60-6"X24"



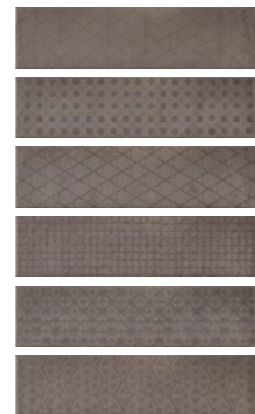
CHARACTER 6 W
26X30-10.2"X12"



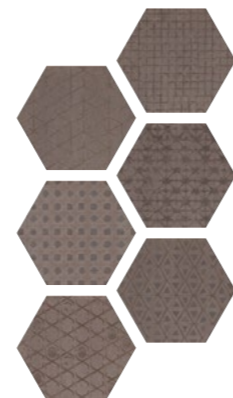
MALIKA 156B
15X60-6"X24"



MALIKA 6 B
26X30-10.2"X12"



MALIKA 156TO
15X60-6"X24"



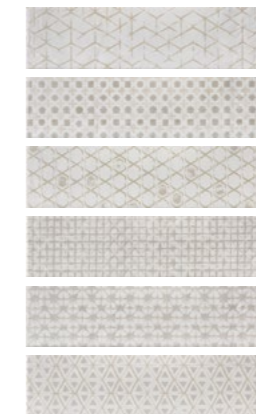
MALIKA 6 TO
26X30-10.2"X12"



MALIKA 156T
15X60-6"X24"



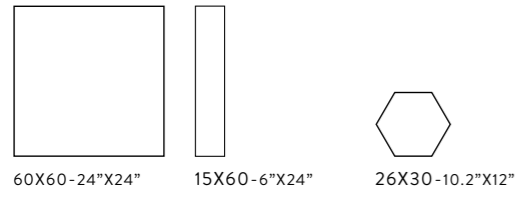
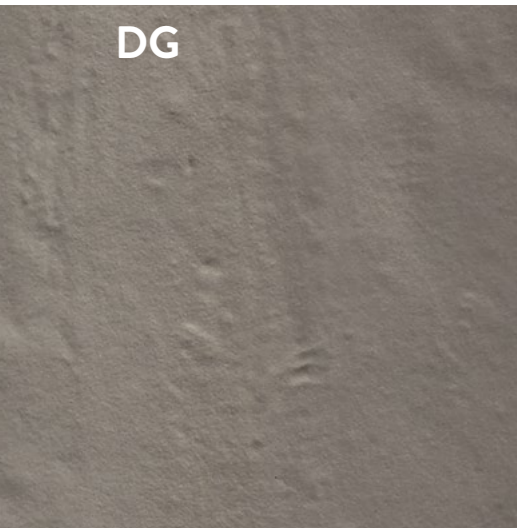
MALIKA 6 T
26X30-10.2"X12"



MALIKA 156W
15X60-6"X24"



MALIKA 6 W
26X30-10.2"X12"



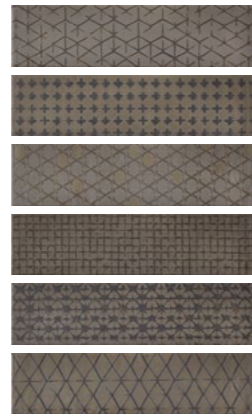
LE TERRE 60DG | LE TERRE 156DG | LE TERRE 6 DG



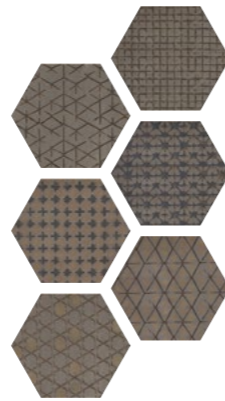
CHARACTER 156DG
15X60-6"X24"



CHARACTER 6 DG
26X30-10.2"X12"

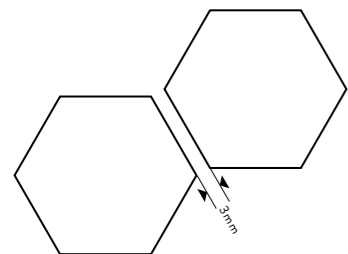


MALIKA 156DG
15X60-6"X24"



MALIKA 6 DG
26X30-10.2"X12"

POSA CONSIGLIATA FUGA 3MM / SUGGESTED LAYING: 3MM JOINT



PEZZI SPECIALI / SPECIAL PIECES



9,5X60-3.7"X24" ▲

[A]	LE TERRE BT60A
[B]	LE TERRE BT60B
[TO]	LE TERRE BT60TO
[T]	LE TERRE BT60T
[W]	LE TERRE BT60W
[G]	LE TERRE BT60G
[DG]	LE TERRE BT60DG

CARATTERISTICHE TECNICHE SPECIFICHE / TECHNICAL FEATURES SPECIFICATIONS

	PEI ISO 10545-7	DIN 51130 (R)	DIN 51097 (A+B+C)	BOT 3000 (DCOF)	BCR REP. CEC 6/81		DM 14/6/89 N. 236	
	CLASSE			G.B.	G.A.	G.B.	C.A.	G.B.
LE TERRE A	4							
LE TERRE B	4							
LE TERRE TO	4							
LE TERRE T	4	R9	A	-	>0,4	>0,4	>0,4	>0,4
LE TERRE W	5							
LE TERRE G	4							
LE TERRE DG	4							

SIMBOLOGIA

SYMBOLS

INDICAZIONI D'USO. INDICATIONS FOR USE.



PAVIMENTO.
FLOOR TILES.



RIVESTIMENTO.
WALL TILES.

FINITURA. FINISH.



NATURALE.
NATURAL.

BORDO. EDGE.



DRITTO.
STRAIGHT.

STRUTTURA. STRUCTURE.



STUTTURATO.
SLATE CUT.

DESTINAZIONI D'USO. SUGGESTED APPLICATIONS.



ABITAZIONI.
DOMESTIC PURPOSE.



COMMERCIALE LEGGERO
TILES FOR LIGHT COMMERCIAL TRAFFIC AREA.

STONALIZZAZIONE. SHADE VARIATION.



v1

ASPETTO SUPERFICIALE. SURFACE LOOK.



OPACO.
MATT.

CARATTERISTICHE DI VENDITA. SALES CHARACTERISTICS.



PRODOTTO VENDUTO UNICAMENTE A SCATOLA INTERA. IL PRODOTTO NON IDENTIFICATO CON TALE SIMBOLO E' DA CONSIDERARSI IN VENDITA AL MQ.

PRODUCT SOLD ONLY IN COMPLETE BOXES. IF THE PRODUCT IS NOT MARKED WITH THIS SYMBOL IT SHOULD BE CONSIDERED AS SOLD BY M².

CERTIFICAZIONI

CERTIFICATIONS

LA NATURA E LA TECNOLOGIA SI FONDONO PER DAR VITA A UN NUOVO CONCETTO DI CERAMICA CHE METTE AL CENTRO IL RAPPORTO TRA L'UOMO E L'AMBIENTE; UN BINOMIO INSCINDIBILE PER IL CONSEGUIMENTO CONSAPEVOLE DEI PRINCIPI DI ECO-EFFICIENZA AZIENDALE ED ECO-COMPATIBILITÀ AMBIENTALE SIGILLATO DA IMPORTANTI RICONOSCIMENTI.

ISO 14001

IL SISTEMA DI GESTIONE AMBIENTALE DI COOPERATIVA CERAMICA D'IMOLA - IN RIFERIMENTO ALLA NORMA UNI EN ISO 14001 - È STATO IMPOSTATO PERSEGUENDO I SEGUENTI PRINCIPI:

- SALVAGUARDIA DELL'AMBIENTE E DELLE RISORSE NATURALI.
- POLITICA ENERGETICA EFFICACE ED EFFICIENTE.
- RISPETTO PER L'ECOSISTEMA.

ISO 9001

COOPERATIVA CERAMICA D'IMOLA HA OTTENUTO LA CERTIFICAZIONE DEL SISTEMA DI QUALITÀ IN RIFERIMENTO ALLA NORMA UNI EN ISO 9001, PER LA PROGETTAZIONE, PRODUZIONE E VENDITA DI PIASTRELLE CERAMICHE IN TUTTE LE TIPOLOGIE PRODUTTIVE.

L'IMPLEMENTAZIONE DI TALE SISTEMA HA I SEGUENTI OBIETTIVI:

- PERSEGUIRE, ATTRAVERSO UN'ADEGUATA GESTIONE DELLE RISORSE TECNICHE E IMPIANTISTICHE, IL CONTINUO MIGLIORAMENTO DEI PROCESSI PRODUTTIVI;
- GARANTIRE IL CORRETTO IMPIEGO, L'EFFICIENZA, L'ATTENDIBILITÀ ED AFFIDABILITÀ DEI RISULTATI DI MISURE E PROVE, ATTRAVERSO LA PIANIFICAZIONE DELLA MANUTENZIONE ED IL CONTROLLO DI IMPIANTI, APPARECCHIATURE E STRUMENTAZIONI;
- CONTRIBUIRE AL MIGLIORAMENTO DEL CONTESTO SOCIALE DI CUI È PARTE, NEL RISPETTO DELLE PERSONE E DELL'AMBIENTE IN CUI È INTEGRATA.

EMAS

COOPERATIVA CERAMICA D'IMOLA, ATTUANDO UNA PRECISA POLITICA AZIENDALE DI SVILUPPO SOSTENIBILE, HA OTTENUTO LA REGISTRAZIONE ECO-MANAGEMENT AND AUDIT SCHEME (EMAS), UN IMPORTANTE RICONOSCIMENTO A LIVELLO EUROPEO, RELATIVO AI SITI PRODUTTIVI, VOLTO AL CONTINUO MIGLIORAMENTO DEGLI STANDARD PRODUTTIVI E ALLA SENSIBILIZZAZIONE DI TUTTO IL PERSONALE SOTTO IL PROFILO DELLA SALVAGUARDIA AMBIENTALE.

LEED

COOPERATIVA CERAMICA D'IMOLA È MEMBRO DEL GREEN BUILDING COUNCIL ITALIA, CHE OPERA PER LA DIFFUSIONE DEI CRITERI DEL MARCHIO LEED. LE PIASTRELLE, IN RELAZIONE ALLE CARATTERISTICHE E AL PROCESSO PRODUTTIVO CON CUI SONO REALIZZATE, POSSONO CONTRIBUIRE AD OTTENERE CREDITI L.E.E.D (LEADERSHIP IN ENERGY AND ENVIRONMENTAL DESIGN). IL LEED È UN SISTEMA DI CERTIFICAZIONE ENERGETICO - AMBIENTALE DEGLI EDIFICI CHE PREVEDE L'ATTRIBUZIONE DI UN PUNTEGGIO, ASSEGNATO IN FUNZIONE DELLA COMPROVATA CONFORMITÀ RISPETTO AD ALCUNI "CREDITI" PRESTABILITI. TALE CONTRIBUTO VA VALUTATO NEL TOTALE DEI MATERIALI UTILIZZATI NELL'EDIFICIO.

NATURE AND TECHNOLOGY COMBINE TO GIVE BIRTH TO A NEW CONCEPT IN CERAMIC TILES WHICH PLACES THE RELATIONSHIP BETWEEN MAN AND THE ENVIRONMENT AT THE CENTRE; AN INSEPARABLE COMBINATION FOR THE CONSCIOUS ACHIEVEMENT OF ECO-EFFICIENT CORPORATE PRINCIPLES AS WELL AS THOSE OF ENVIRONMENTAL ECO-COMPATIBILITY, SEALED WITH IMPORTANT RECOGNITIONS.



THE ENVIRONMENTAL MANAGEMENT SYSTEM OF COOPERATIVA CERAMICA D'IMOLA - IN REFERENCE TO THE UNI EN ISO 14001 NORMATIVE - WAS IMPOSED ON THE BASIS OF THE FOLLOWING PRINCIPLES:

- PROTECTION OF THE ENVIRONMENT AND OF NATURAL RESOURCES.
- EFFICIENT AND EFFECTIVE ENERGY POLICY.
- RESPECT FOR THE ECOSYSTEM.



COOPERATIVA CERAMICA D'IMOLA HAS OBTAINED THE QUALITY SYSTEM CERTIFICATION, IN RELATION TO THE UNI EN ISO 9001 NORMATIVE, FOR THE DESIGN, PRODUCTION AND MARKETING OF CERAMIC TILES FOR ALL OF THE PRODUCTION TYPES.

IMPLEMENTATION OF THIS SYSTEM - IN RELATION TO THE UNI EN ISO 9001 NORMATIVE - HAS THE FOLLOWING OBJECTIVES:

- ACHIEVEMENT, THROUGH ADEQUATE MANAGEMENT OF THE TECHNICAL AND SYSTEM RESOURCES, OF THE ONGOING IMPROVEMENT OF THE PRODUCTION PROCESSES.
- GUARANTEE THE CORRECT USE, EFFICIENCY, RELIABILITY AND DEPENDABILITY OF THE RESULTS OF THE MEASUREMENTS AND TESTS THROUGH THE PLANNING OF THE MAINTENANCE AND THE CONTROL OF THE SYSTEMS, EQUIPMENT AND INSTRUMENTATION.
- CONTRIBUTE TO THE IMPROVEMENT OF THE SOCIAL CONTEXT OF WHICH IT IS PART AND IN TERMS OF THE PEOPLE AND THE ENVIRONMENT INTO WHICH IT IS INTEGRATED.



THROUGH THE IMPLEMENTATION OF A PRECISE COMPANY POLICY ON SUSTAINABLE DEVELOPMENT, COOPERATIVA CERAMICA D'IMOLA HAS OBTAINED ECO-MANAGEMENT AND AUDIT SCHEME (EMAS) REGISTRATION. THIS IS AN IMPORTANT RECOGNITION ON A EUROPEAN LEVEL THAT AIM AT THE CONTINUOUS IMPROVEMENT OF PRODUCTION STANDARDS AND AWARENESS OF ALL OF ITS EMPLOYEES IN TERMS OF PROTECTING THE ENVIRONMENT. THE EMAS SYSTEM IS A VOLUNTARY AWARENESS FOR THOSE COMPANIES COMMITTED TO EVALUATING AND IMPROVING THEIR ENVIRONMENTAL EFFICIENCY THROUGH A MORE RESPONSIBLE CHOICE OF BUYING AND MANAGEMENT, A MORE CAREFUL USE OF AIR, WATER, TERRITORY, RAW MATERIALS AND ENERGY.



COOPERATIVA CERAMICA D'IMOLA IS A MEMBER OF THE GREEN BUILDING COUNCIL ITALIA, WHICH OPERATES FOR THE DIFFUSION OF THE LEED ACCREDITATION SYSTEM. IN RELATION TO THE CHARACTERISTICS AND PRODUCTION PROCESS IN WHICH THEY ARE MANUFACTURED, TILES CAN CONTRIBUTE TO OBTAINING L.E.E.D (LEADERSHIP IN ENERGY AND ENVIRONMENTAL DESIGN) CREDITS. LEED IS AN ENERGY-ENVIRONMENTAL ACCREDITATION SYSTEM FOR BUILDINGS AND IS CHARACTERISED BY A POINTS SYSTEM ATTRIBUTED ACCORDING TO THE VERIFIED CONFORMITY OF SEVERAL PRE-ESTABLISHED "CREDITS". THIS CONTRIBUTION IS EVALUATED OVER THE TOTAL OF MATERIALS USED IN THE BUILDING.



IMOLACERAMICA.IT



A brand of
Cooperativa Ceramica d'Imola S.c.

Via V. Veneto, 13
40026 Imola (BO) Italia
Tel. +39 0542 601601
Fax +39 0542 31749
